



adaptTo()

APACHE SLING & FRIENDS TECH MEETUP
2 - 4 SEPTEMBER 2019

The newest OSGi specs: CDI integration and Release 8
Carsten Ziegeler & David Bosschaert



About David

- Senior Computer Scientist @ Adobe
- Member of the Apache Software Foundation
- OSGi Enterprise Expert Group co-chair

About Carsten

- Principal Scientist @ Adobe
- Member of the Apache Software Foundation
- OSGi Expert Groups + Member of the Board

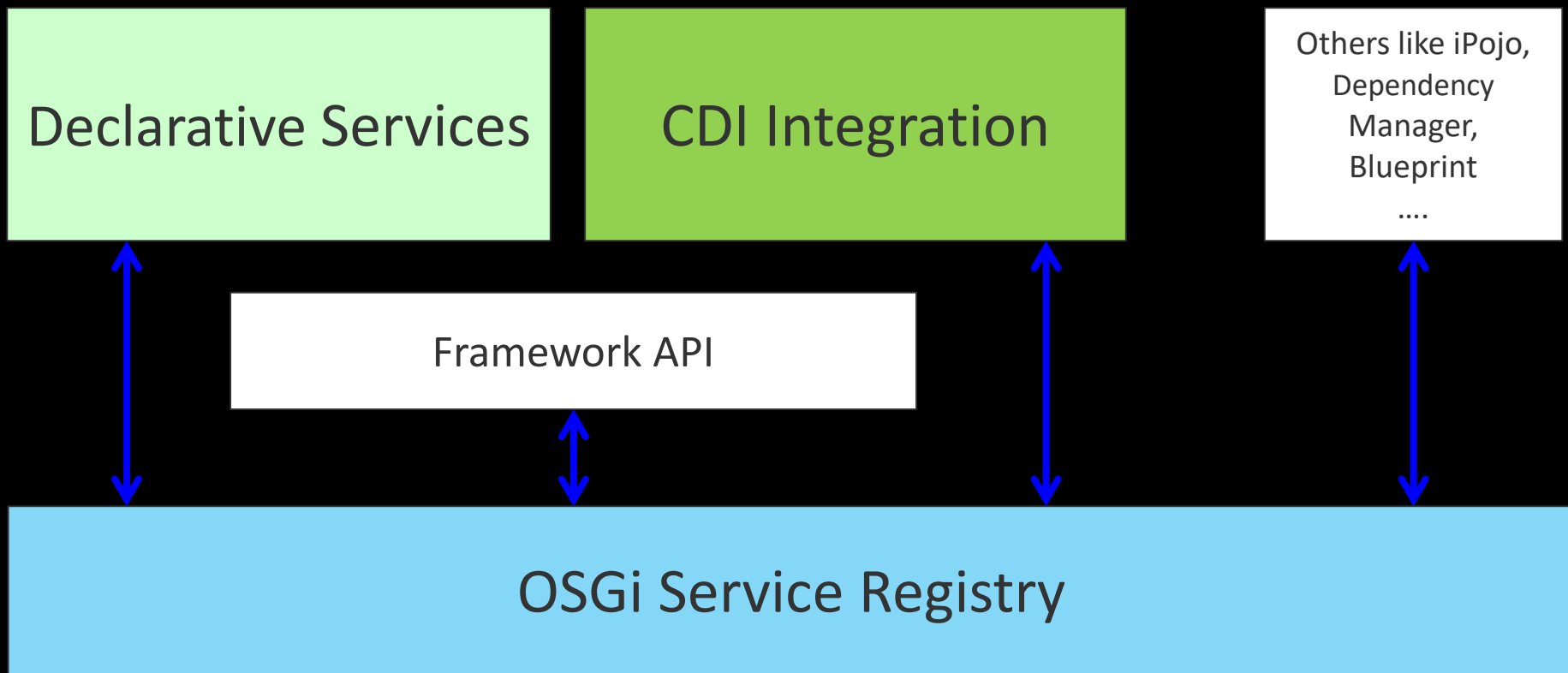
- The OSGi CDI integration spec
- New R8 specs under way
 - Messaging
 - Connect
 - Condition Service
 - Feature Model
 - ... more ...

- Requirements, Use Cases -> RFP
- Technical Specification -> RFC
- Reference Implementation
- Compatibility Testsuite
- Spec Chapter
- Books: Core, Compendium, Enterprise

OSGi CDI Integration

- Service Registry
 - Publish/find/bind
- Service Scopes
 - Singleton
 - Bundle
 - Prototype

Component Container Integration



Register a Service using CDI

```
@Bean
@Service(value = GameController.class)
@ServiceDescription
    ("This is the core game component")
public class GameControllerImpl
implements GameController {

}
```

Reference Services and Beans

```
@Bean
@Service(Servlet.class)
public class GameServlet extends HttpServlet {

    @Inject @Reference
    private GameController game;

    @Inject
    private HighscoreService highscore;
```

Service Properties

```
@Bean
@SingleComponent
@AppServletContext.ContextConfig
public class AppServletContext {

    @Retention(RetentionPolicy.RUNTIME)
    @Target(ElementType.TYPE)
    @BeanPropertyType
    public @interface ContextConfig {
        String service_name() default AppServletContext.NAME;

        String service_path() default "/guessinggame";
    }
}
```

- Connect CDI with OSGi
- Supports CDI Annotations and Extensions
- Constructor, Field, Method Injection
- Supports Component Property Types

Why CDI Extender?

- Declarative Services are great, so why?
- CDI Extender Use Cases
 - Existing Code
 - Enhanced annotation processing
 - Private services/beans

How to use CDI?

- Apache Aries CDI Extender Implementation
- Bnd Tooling \geq 4.2.0

OSGi R8

Messaging (RFP 192)

- Remote async messaging API for OSGi
- Publish-Subscribe
- Point-to-point
- Lightweight
- QoS & Intents
 - require and advertise capabilities

Connect (RFP 196)

- Connect OSGi to the „outside“
- Popular Application Frameworks
- JPMS
- JARs on the classpath
- Native compilation

Condition Service (RFC 242)

- When is your asynchronous system fully ready?
- Generally very app-specific
- Sometimes multiple levels
- Introducing:
 - `org.osgi.service.condition.Condition`
service interface

Waiting for a condition

- A client can just listen for a condition:

```
@Reference(  
    target="(osgi.condition.id=mycondition)")  
Condition ready
```

- Or default to the predefined true condition:

```
(osgi.condition.id=true)
```

... change via config by setting target property

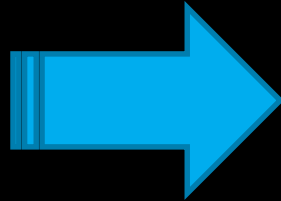
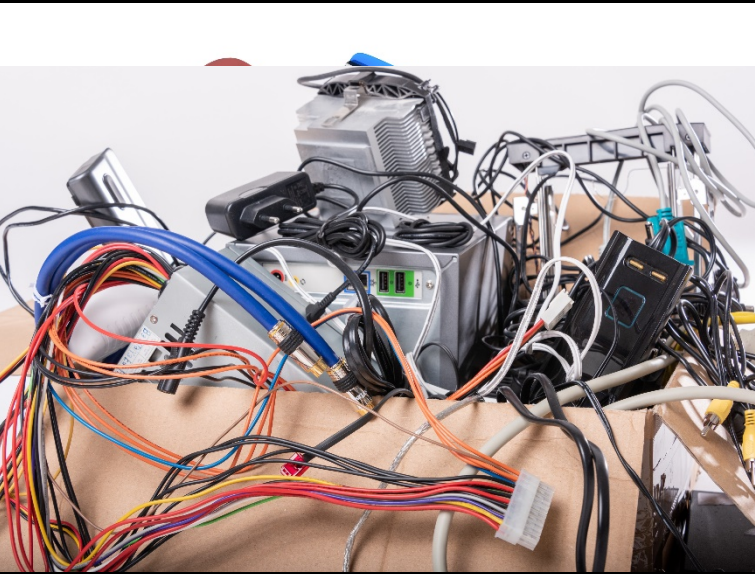
- Just register a Condition service (custom ID)
- Configuration-based:

```
"osgi.condition.factory~systemready" : {  
    "osgi.condition.identifier" : "application.ready",  
    "osgi.condition.match.all" : [  
        "&(objectClass=javax.servlet.Servlet)(role=main)",  
        "(db.connection.url=*)"  
    ],  
    "osgi.condition.match.none" : [  
        "&(objectClass=javax.servlet.Servlet)(role=loading)"  
    ]  
}
```

Features (RFC 241)

- Design and work with entities
 - Larger than individual bundles
- Configuration
- Additional metadata
- A design artifact
 - can be mapped to runtime implementations (Sling/Karaf/Eclipse etc...)

Features – building a system



Easy!

Others

- RFP 190 Resource Encoding for Java Modules
- RFP 191 Microservice Architecture
- RFP 195 Actor Runtime
- RFP 197 Type-safe events

... and more: <https://github.com/osgi/design>

Q & A

Appendix

- OSGi RFPs and RFCs
 - <https://github.com/osgi/design>
- OSGi Specifications
 - <https://osgi.org/specification/osgi.core/7.0.0/>
 - <https://osgi.org/specification/osgi.cmpn/7.0.0/>
 - <https://osgi.org/specification/osgi.enterprise/7.0.0/>

- CDI Example
 - <https://github.com/cziegeler/samples.guessinggame.cdi>
- CDI Launcher
 - <https://github.com/cziegeler/features.cdi>

- From stock.adobe.com:

Karton voll mit Computerschrott By peno - penofoto.de

Modern PC isolated on white background. 3D illustration By Destina

Computer spare parts store By Vlad Kochelaevskiy