



adaptTo()

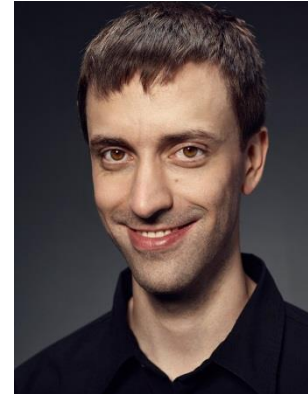
APACHE SLING & FRIENDS TECH MEETUP
BERLIN, 26-28 SEPTEMBER 2016

AEM Manager

Stefan Seifert, pro!vision GmbH

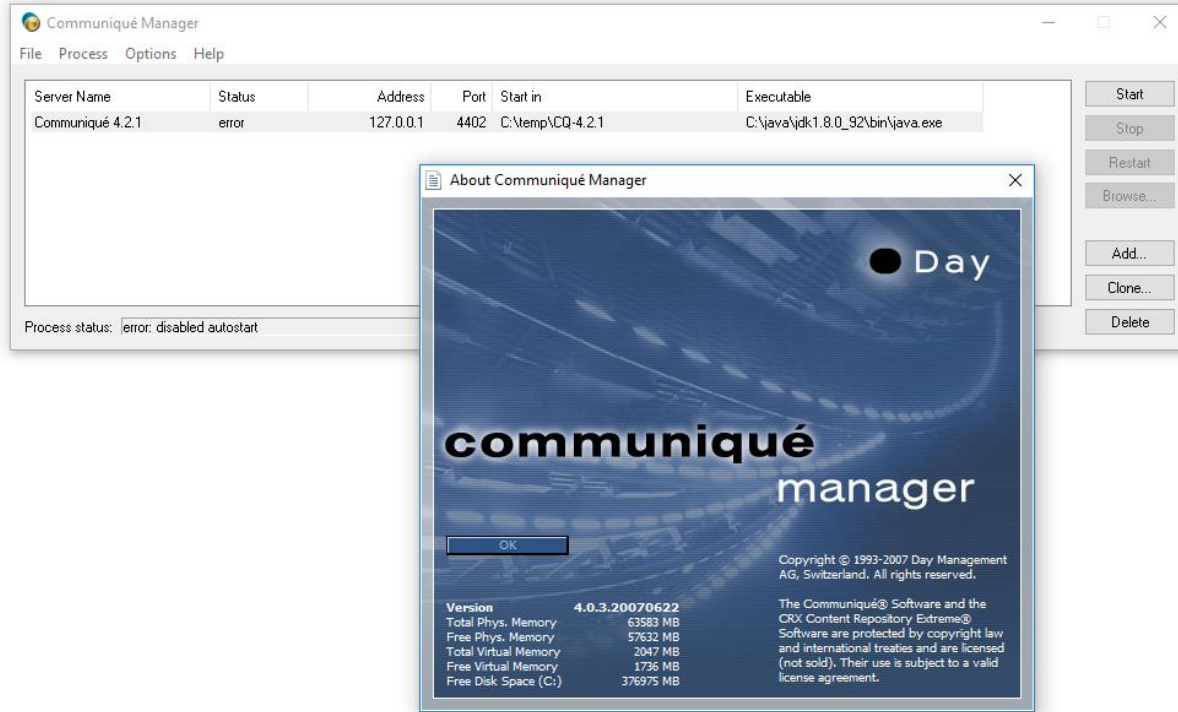
About the Speaker

- AEM Developer
- Apache Sling PMC
- CTO of pro!vision GmbH



<https://www.pro-vision.de>

Ye olden days



- Taskbar application for managing AEM 5 and 6 instances



Instance definition

AEM Instance

Name:

Hostname: Port:

Context Path: AEM Instance Type:

Run Mode: Author Publish Additional Run Mode(s):

Install AEM Sample Content (Geometrix) on first startup

AEM Jar File: ...

Java Exec: ...

Username: Show Process Window for this Instance

Password: Open (default) browser after instance startup

Taskbar

Icon Set: Show in Taskbar

Icon File: ...

Custom JVM Settings

Setting 1

Setting 2

Setting 3

Browser: ...

JVM Settings

Heap Min: MB

Heap Max: MB

Perm Gen: MB

Enable JVM Debugging

Debug Port:

Enable JProfiler instrumentation

JProfiler Port:

JConsole/JVisualVM Support

JConsole Port:

Hide AEM Config Wizards

Remote instance (do not check for local process)

OK Cancel

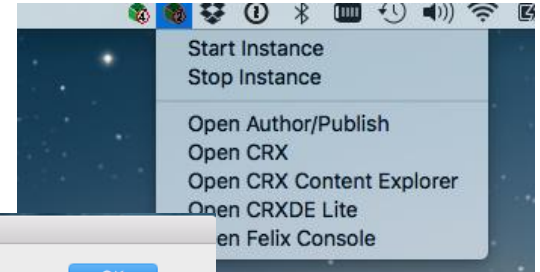
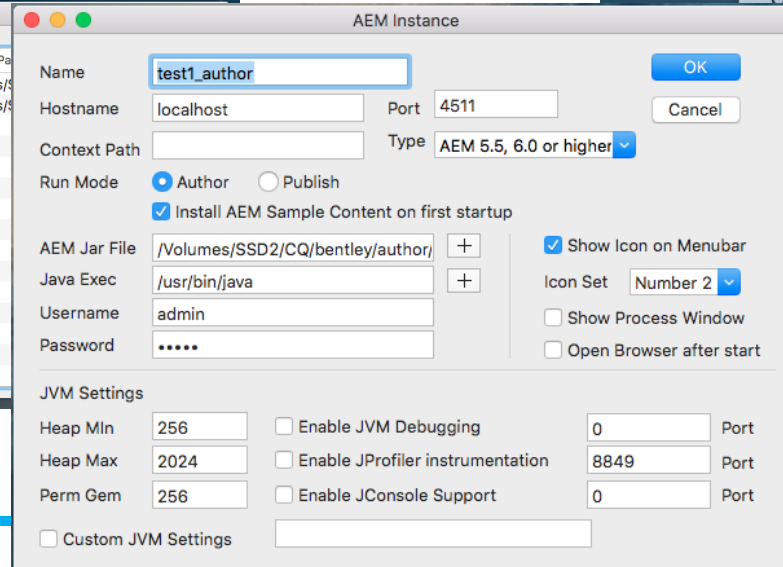
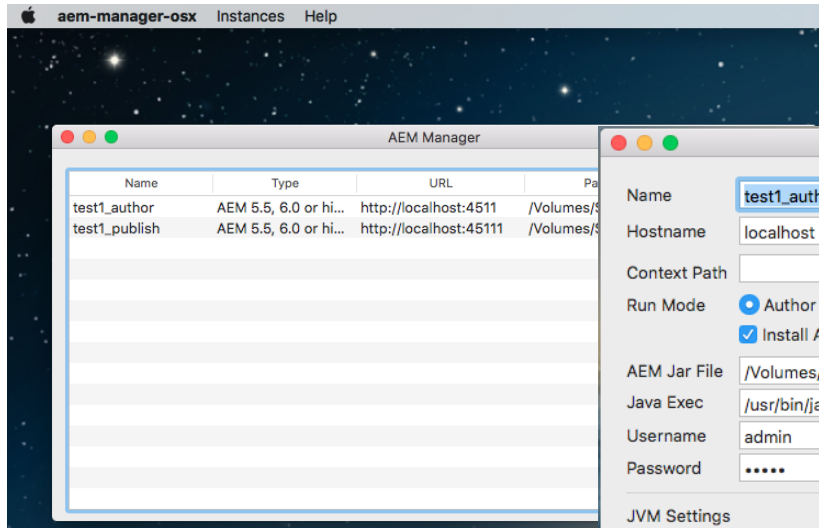
AEM Manager

File Instances ?

Name	Type	URL	Path
AEM610_test	AEM 5.5, AEM 6 ...	http://localhost:4502	D:\aem\AEM610_test
AEM610_test_publish	AEM 5.5, AEM 6 ...	http://localhost:4503	D:\aem\AEM610_test

- Display individual taskbar icon per instance
- Icon shows AEM/bundle status
- Quick access to log files
- Support custom icons

■ AEM Manager for MacOS



How to get

Windows version

<https://github.com/wcm-io-devops/aem-manager>

MacOS version

<https://github.com/wcm-io-devops/aem-manager-osx>