

adaptTo()

APACHE SLING & FRIENDS TECH MEETUP
BERLIN, 28-30 SEPTEMBER 2015

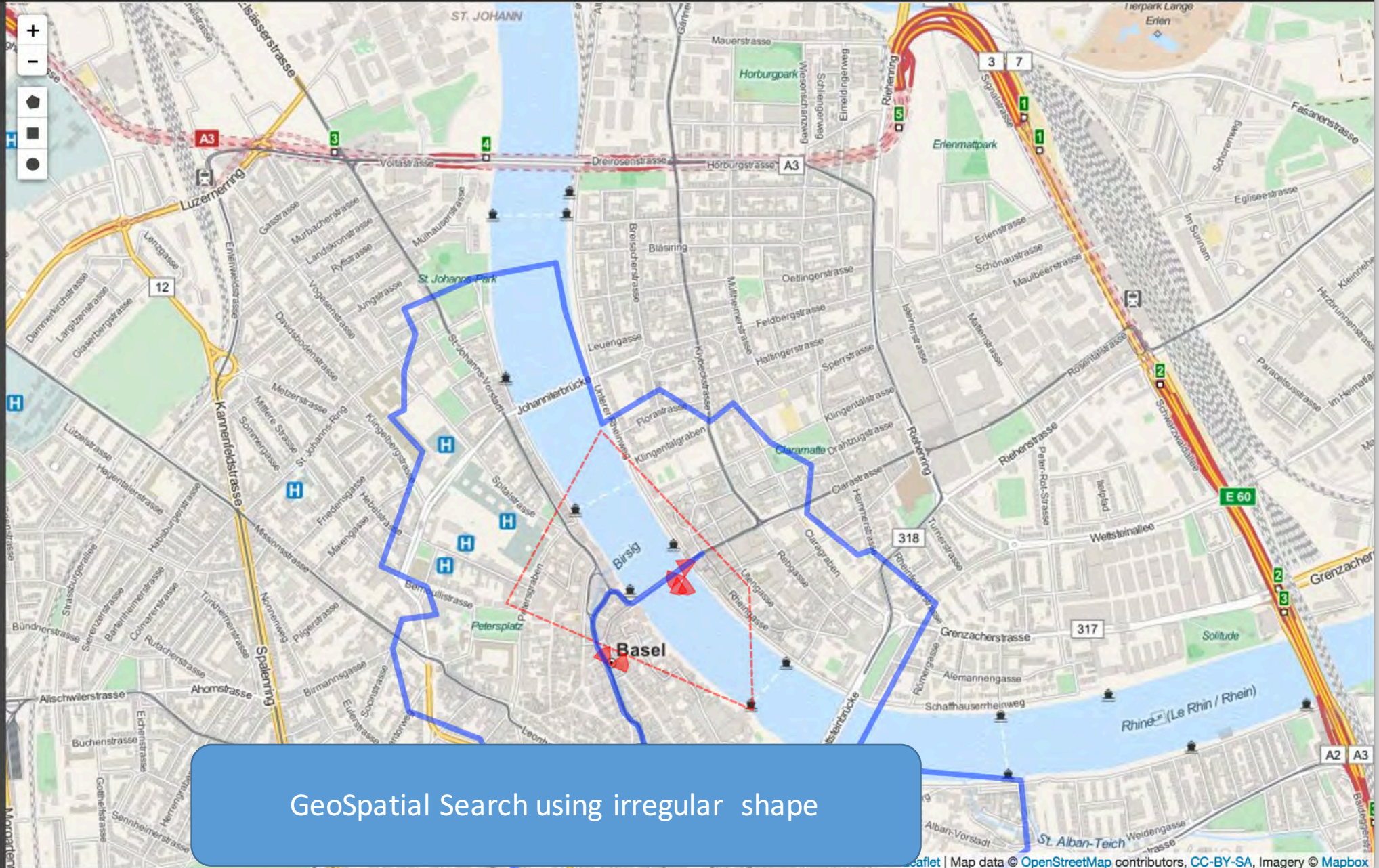
AEM DAM Extensions
GeoSpatial * Facial Recognition

Jakub Kaniewski, Adobe Systems

- Projects
- Sites
- Apps
- Publications
- Forms
- Assets
- Screens
- Personalization >
- Communities >
- Commerce >
- Tools >



GeoSpatial Video with GPX path



GeoSpatial Search using irregular shape

Projects - ShareMap Services Files Sling Explorer

/old_basel.json/jcr:content/geodata/line-1443616967361/ll-2 Disconnect

- ▶ geometrixx-outdoors
- ▶ geometrixx
- ▶ geometrixx-media
- ▶ geometrixx-unlimited
- ▶ geometrixx-gov
- ▶ formsanddocuments
- ▶ home
- ▶ projects
- ▼ geoevolve
 - ▶ jcr:content
 - ▶ photos
 - ▶ video
 - ▼ shapes
 - ▶ jcr:content
 - ▶ basel.tif
 - ▼ old_basel.json
 - ▶ jcr:content
 - ▼ geodata
 - ▶ line-1443616967361
 - ▶ ll-0
 - ▶ ll-1
 - ▶ ll-2
 - ▶ ll-3
 - ▶ ll-4
 - ▶ ll-5
 - ▶ ll-6
 - ▶ ll-7
 - ▶ ll-8
 - ▶ ll-9
 - ▶ ll-10
 - ▶ ll-11
 - ▶ ll-12

```

1  {
2    "metadata": {
3      "generated": 1362092199000,
4      "title": "Old Basel City"
5    },
6    "type": "FeatureCollection",
7    "crs": {
8      "type": "name",
9      "properties": {
10       "name": "urn:ogc:def:crs:OGC:1.3:CRS84"
11     }
12   },
13   "features": [
14     {
15       "type": "Feature",
16       "properties": {
17         "Name": "Line 1",
18         "Description": ""
19       },
20       "geometry": {
21         "type": "LineString",
22         "coordinates": [
23           [7.582660759973018, 47.56778383615719], [7.580085839405297, 47.56703098177393], [7.58051499283325, 47.56703098177393]
24         ]
25       }
26     },
27     {
28       "type": "Feature"
29     }
30   ]

```

Name	Value	Type	Read only
alt	0.0	Double	No
jcr:primaryType	nt:unstructured	Name	Yes
lat	47.566393942689956	Double	No
lng	7.58051499283325	Double	No
time	0	Long	No

Name: Type: Value:

GeoJSON components imported to JCR tree

```
about.png (1400x788) x AEM Assets x 127.0.0.1:8983/solr/select...
127.0.0.1:8983/solr/select?q=geo%3A"Intersects%28POLYGON%28%28287.5885432958602905+47.558160385359564%2C+7.588140964508057+47.55801920003391%2C+7.58798003...
View source
{
  - responseHeader: {
    status: 0,
    QTime: 0,
    - params: {
      q: "geo:"Intersects(POLYGON((7.5885432958602905 47.558160385359564, 7.588140964508057 47.55801920003391, 7.587980031967163 47.55824726844778, 7.5886452198028564 47.55841017384987, 7.5885432958602905 47.558160385359564)))",
      rows: "100000",
      wt: "json"
    }
  },
  - response: {
    numFound: 4,
    start: 0,
    - docs: [
      - {
        id: "/content/dam/geoevolve/shapes/old_basel.json/jcr:content/geodata/line-1435160088601",
        geopath: "/content/dam/geoevolve/shapes/old_basel.json/jcr:content/geodata",
        assetpath: "/content/dam/geoevolve/shapes/old_basel.json",
        - geo: [
          "POLYGON((7.582660759973018 47.56778383615719,7.580085839405297 47.56703098177393,7.58051499283325 47.566393942689956,7.580085839405297 47.56546732655534,7.580085839405297 47.56448277895169,7.579570855291765 47.56430903333599,7.580772484890047 47.56344029661337,7.579227532549389 47.56054440348705,7.580944146261204 47.56002312572392,7.581287469003579 47.559328080638394,7.580000008719719 47.55921223889435,7.579656685977343 47.55845926131502,7.580257500776485 47.55689535022666,7.582918252029813 47.55620026364827,7.584291542999253 47.554114948588754,7.58377655888572 47.554114948588754,7.583261574772157 47.55347775243474,7.584634865741627 47.55272469244536,7.585579003283112 47.55278262052103,7.5866089715102065 47.552029550542464,7.586523140824598 47.55081303002477,7.587209786309347 47.55040751691026,7.5884972465932075 47.55040751691026,7.591072167160927 47.54936475449387,7.591672981960037 47.548785433075565,7.592445458130366 47.548785433075565,7.592874611558319 47.5492488907225,7.5963078389819465 47.55173990536151,7.601629341488574 47.55255090783407,7.603345955200387 47.553419825127435,7.603088463143621 47.555157616491826,7.5975094685802285 47.55550516784918,7.596736992409899 47.55562101778933,7.5999127277767595 47.55961768387791,7.5975094685802285 47.56094983816148,7.5969944844666655 47.56083400000324,7.595106209383664 47.56187653420694,7.595277870754852 47.56309279789034,7.593732918414226 47.56367196114808,7.592359627444787 47.5646565239911,7.591501320588881 47.56419320260539,7.58961304550588 47.56500401234107,7.5874672783661135 47.564135287144026,7.5860939873966435 47.566973069450086,7.5857506646543 47.56818921480451,7.582489098601862 47.56778383615719,7.582660759973018 47.56778383615719)))"
        ],
        _version_: 1513733346194096000
      },
      - {
        id: "/content/dam/geoevolve/photos/IMG_20150624_134201.jpg/jcr:content/geodata/line-1435147938045",
        geopath: "/content/dam/geoevolve/photos/IMG_20150624_134201.jpg/jcr:content/geodata",
        assetpath: "/content/dam/geoevolve/photos/IMG_20150624_134201.jpg",
        - geo: [
          "POLYGON((7.587777777777777 47.558055555555555,7.588287647784603 47.55834427472425,7.588295036822252 47.55833822569015,7.5883022682977845 47.558332090551986,7.588309340008425 47.55832587117859,7.58831624980006 47.55831956946443,7.5883229955679 47.558313187329084,7.58832957525712 47.558306726716594,7.588335986863482 47.558300189594945,7.58834222843395 47.55829357795539,7.58834829806728 47.55828689381191,7.588354193914602 47.558280139200555,7.5883599141799865 47.55827331617885,7.588365457120982 47.55826642682515,7.588370821049158 47.55825947323801,7.588376004330607 47.55825245753557,7.588381005386 19766,7.58839490024698 47.55822381658394,7.588399157728 901212,7.588410789604716 47.55819435588148,7.588414282770 860465,7.588423594992462 47.55816421895779,7.588426306823 26071492,7.588433254023655 47.55813355263693,7.588435171308 527827,7.588439719640466 47.55810250632213,7.588440833037 6315519,7.58844296034306
```

SOLR GeoSpatial query result

Investigation Search

Source: This Video

Search: Search By

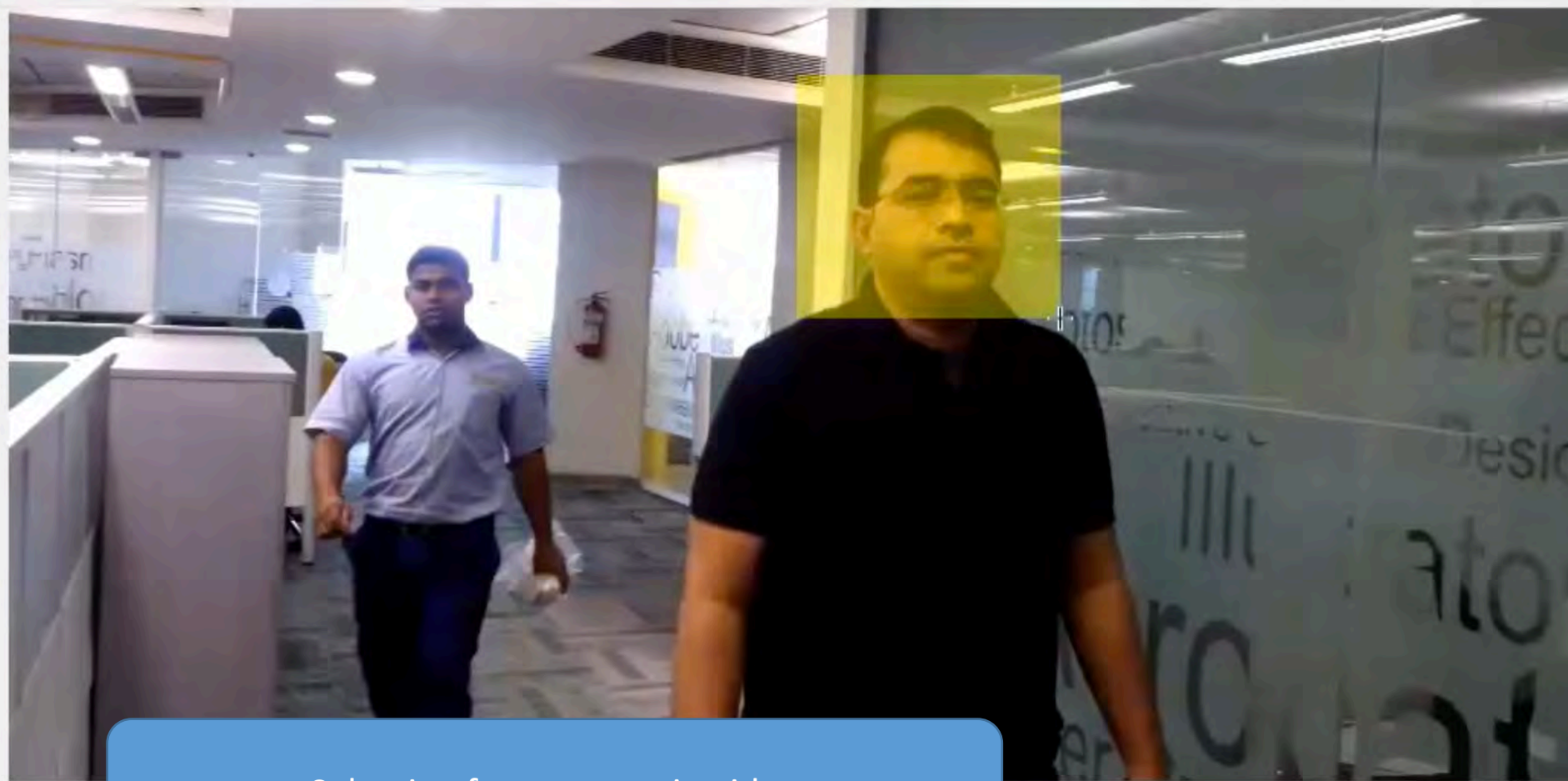
Filter: Filter

Confidence Level: 0

Threshold: 100

Search

Search Timeline Renditions Edit Annotate Download (0) Evidence



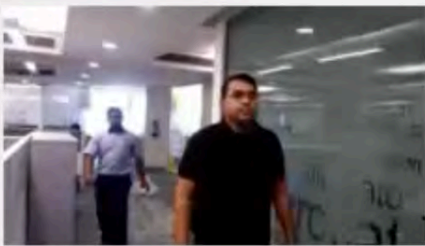
Selecting face pattern in video

Timeline with play button and numerical scale from 1 to 21.

Search

Image ▼

Please select search by value



VIDEO001.MP4
Source: This Video
960x544 12.8 MB

Filter

Filter ▼

Confidence Level

Threshold

Search



Video progress bar with a play button icon on the left and a timeline from 1 to 21 seconds. The current position is at approximately 4.5 seconds.

Search results on the same video

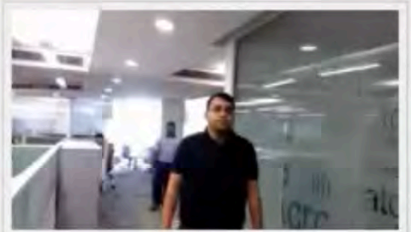
This Case

Details [Search Results](#)

Grid Map

Search

Image



VIDEO001.MP4
Source: This Video
960x544 12.8 MB

Filter

Filter

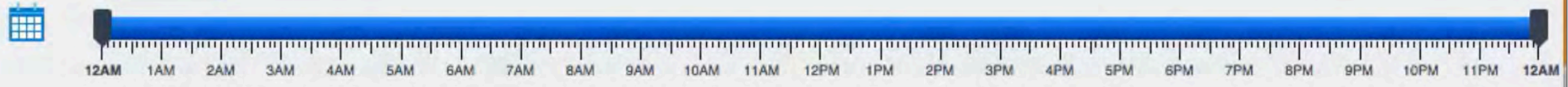
Confidence Level

0

Threshold

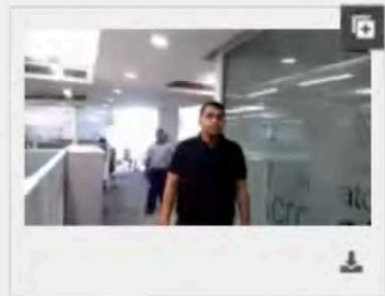
100

Search

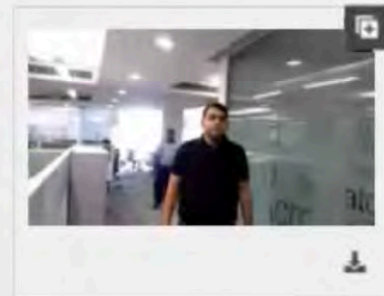


prev 1 next

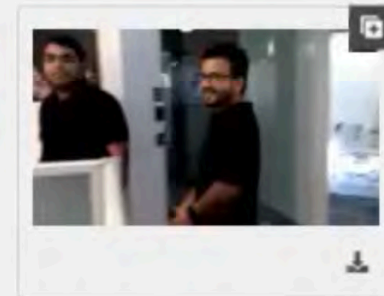
15 Per Page



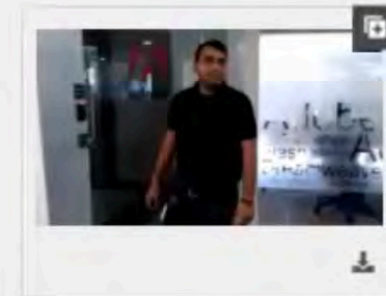
VIDEO001.MP4
Source: This Case
Keywords: one person



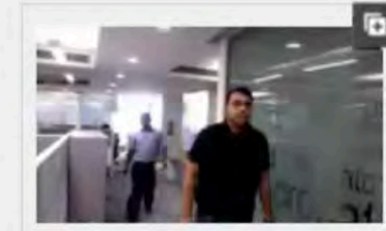
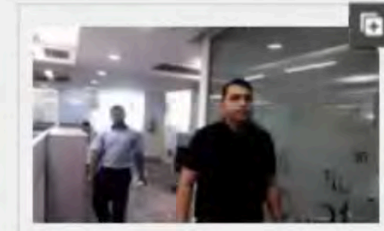
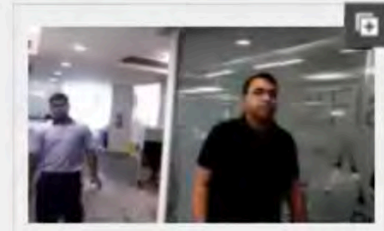
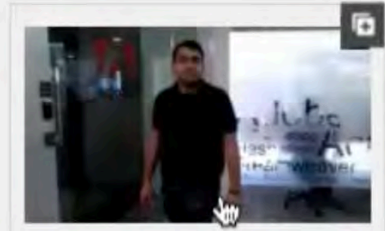
VIDEO001.MP4
Source: This Case
Keywords: one person



VIDEO002.MP4
Source: This Case
Keywords: two

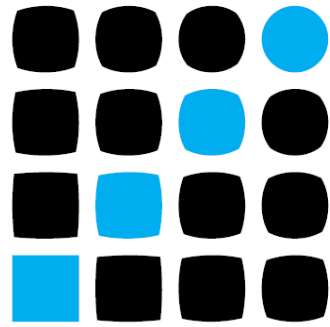


VIDEO002.MP4
Source: This Case
Keywords: two



VIDEO001.MP4
Source: This Case
Keywords: one person

Search result in all videos – we can mix facial condition with other conditions (ie. on metadata)



adaptTo()

APACHE SLING & FRIENDS TECH MEETUP
BERLIN, 28-30 SEPTEMBER 2015

For more details visit my Twitter

<https://twitter.com/jkan997>

BTW. Have even heard about SlingBeans, AEM NetBeans plugin?

<https://github.com/jkan997/SlingBeans>